

job name:
 type:

12" miniskrt™ spec sheet 90CRI

material

housing

precision CNC spun .064" aluminum outer housing available in 15 standard powder coat paint finishes listed below.
 .060" aluminum liner powder coat painted high reflectance matte white.

diffuser

choose from .125" white acrylic or .064" spun aluminum powder coat painted high reflectance matte white.

LED

custom LED board in 3000K, 3500K, or 4000K (90+ cri standard). LEDs are rated >50,000 hours L70 (10K) at 85°C per LM-80 test data, and 70,000 hours projected life per IES TM-21. power cord color options listed below.

driver

in canopy, constant current, class P class 2 power unit, class A sound rating, universal input (120-277V) programmable driver, 1% minimum dimming level, PF >0.90. protections include short circuit, input/output isolation and surge protection (3KV). wired for 0-10v dimming from factory.

mounting

spun aluminum canopy painted to match fixture. three ultrathin vertical stainless steel cables and field adjustable grippers that allow for exact AFF mounting heights. cloth-covered power cord color options listed below. cord requires special stripping tool (link).

power over cable (optional)

Class 2 LED powered suspension system that suspends and powers the fixture with thin stainless steel copper-core conductive cables, providing a clean look without the need for a separate power cord. powered suspension requires cable cutter (link) specifically designed to cut stainless steel aircraft cable from 1/32" to 1/8".

finish

select from standard powder coat paint finishes or specify RAL# for custom colors.

emergency

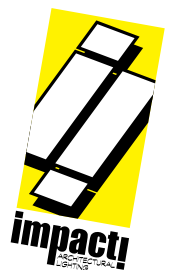
if required, recommend use of inverter (by other).



catalog number

<input type="text"/>	<input type="text"/>	<input type="text"/>	<input type="text"/>	<input type="text"/>	<input type="text"/>	<input type="text"/>
----------------------	----------------------	----------------------	----------------------	----------------------	----------------------	----------------------

size	diffuser	CCT	lumens	painting finish	power cord	options	
P6112 12.5"dia X 4.5"ht	A acrylic	30 3000K	LO 1120 lm	AP anodized paint	BUPC blue cloth cord	3FT 36" cables 6FT 72" cables	
		35 3500K	HI 2615 lm	BS brass	ORPC orange cloth cord		
		40 4000K		BU blue	PLPC purple cloth cord		
	M metal	30 3000K	LO 910 lm	CP champagne	RDPC red cloth cord	POC power over cable	
			35 3500K	HI 2125 lm	FB flat black		WHPC white power cord and canopy
			40 4000K		GM gun metal		BKPC black power cord and canopy
				MB military blue	SBPC silver braid power cord and white canopy		
				MW matte white			
				OR orange			
				RD red			
				SB satin black			
				SS satin silver			
				TG textured gray			
				YO yellow			
				premium finish			
				RAL specify RAL#			



job name:
 type:

16" miniskrt™ spec sheet 90CRI

material housing
 precision CNC spun .064" aluminum outer housing available in 15 standard powder coat paint finishes listed below. .060" aluminum liner powder coat painted high reflectance matte white.

diffuser
 choose from .125" white acrylic or .064" spun aluminum powder coat painted high reflectance matte white.

LED
 custom LED board in 3000K, 3500K, or 4000K (90+ cri standard). LEDs are rated >50,000 hours L70 (10K) at 85°C per LM-80 test data, and 70,000 hours projected life per IES TM-21. power cord color options listed below.

driver
 in canopy, constant current, class P class 2 power unit, class A sound rating, universal input (120-277V) programmable driver, 1% minimum dimming level, PF >0.90. protections include short circuit, input/output isolation and surge protection (3KV). wired for 0-10v dimming from factory.

mounting
 spun aluminum canopy painted to match fixture. three ultrathin vertical stainless steel cables and field adjustable grippers that allow for exact AFF mounting heights. cloth-covered power cord color options listed below. cord requires special stripping tool (link).

power over cable (optional)
 Class 2 LED powered suspension system that suspends and powers the fixture with thin stainless steel copper-core conductive cables, providing a clean look without the need for a separate power cord. powered suspension requires cable cutter (link) specifically designed to cut stainless steel aircraft cable from 1/32" to 1/8".

finish
 select from standard powder coat paint finishes or specify RAL# for custom colors.

emergency
 if required, recommend use of inverter (by other).

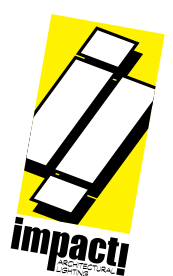


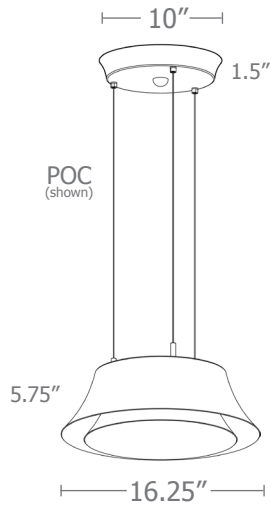
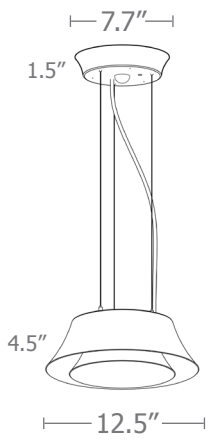
catalog number

<input type="text"/>	<input type="text"/>	<input type="text"/>	<input type="text"/>	<input type="text"/>	<input type="text"/>	<input type="text"/>
----------------------	----------------------	----------------------	----------------------	----------------------	----------------------	----------------------

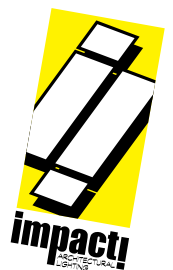
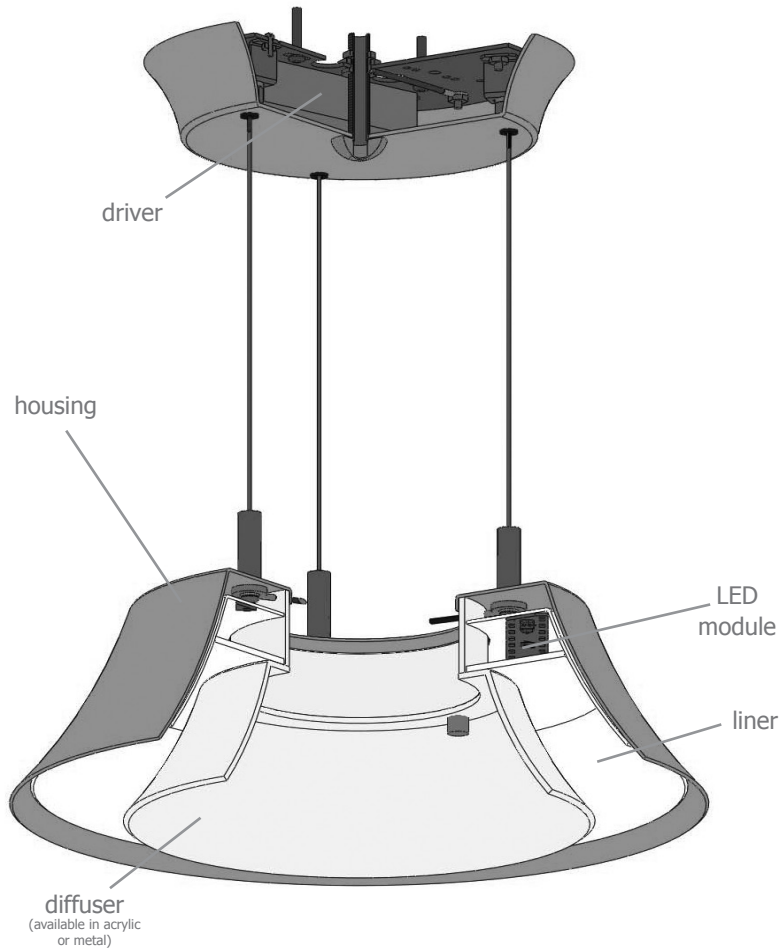
size	diffuser	CCT	lumens	painting finish	power cord	options
P6116 16.25"dia X 5.75"ht	A acrylic	30 3000K	LO 2660 lm	AP anodized paint	BUPC blue cloth cord	3FT 36" cables
		35 3500K	HI 3920 lm	BS brass	ORPC orange cloth cord	6FT 72" cables
		40 4000K		BU blue	PLPC purple cloth cord	
	M metal	30 3000K	LO 2160 lm	BZ bronze	RDPC red cloth cord	
		35 3500K	HI 3185 lm	CP champagne	WGPC white & gray dot cloth cord	
		40 4000K		FB flat black	POC power over cable	
			GM gun metal	WHPC white power cord and canopy		
			MB military blue	BKPC black power cord and canopy		
			MW matte white	SBPC silver braid power cord and white canopy		
			OR orange			
			RD red			
			SB satin black			
			SS satin silver			
			TG textured gray			
			YO yellow			

premium finish
RAL specify RAL#





colored cloth cord



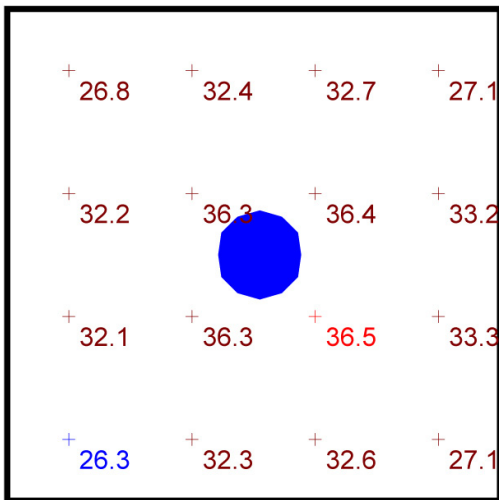
Typical Lighting Layout

Schedule

Quantity	Manufacturer	Catalog Number	Description	Lamp	Wattage
1	Impact Architectural Lighting	P6116 A 40HI	16" dia. pendant minjskrt w/ acrylic diffuser	4000k 90cri LED	39

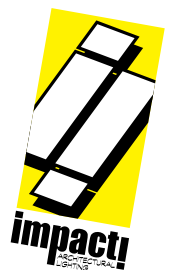
Statistics

Description	Symbol	Avg	Max	Min	Max/Min	Avg/Min
minjskrt - acrylic	+	32.1 fc	36.5 fc	26.3 fc	1.4:1	1.2:1



Plan View
Scale - 1" = 2ft

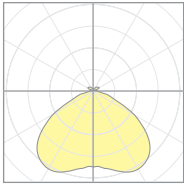
- 8' x 8' x 10'H space
- 80/50/20 reflectances
- bottom of fixture at 8' aff
- FC readings at 2.5' aff
- layout conducted using P6116 HI lumen 90 CRI package (3920 delivered lumens)



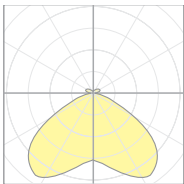
Calculation Table

The application of a Light Loss Factor is required to:

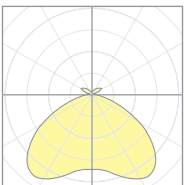
- match the lumen output for the power module specified
- incorporate the increased lumen output due to LED/Driver upgrades



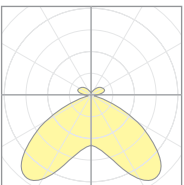
20913
P6112-A-40LO



20914
P6112-M-40LO



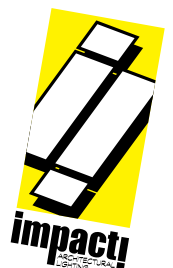
20919
P6116-A-40HI



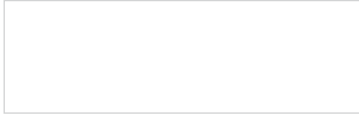
20920
P6116-M-40HI

Cat No	Delivered* Lumens	Watts 120V / 277V	IES File #	LLF to be applied
P6112-A LO	1120	12	20913	.90
P6112-A HI	2615	28	20915	.99
P6112-M LO	910	11	20914	.91
P6112-M HI	2125	26	20916	.99
P6116-A LO	2660	26	20917	.95
P6116-A HI	3920	39	20919	.99
P6116-M LO	2160	26	20918	1.02
P6116-M HI	3185	39	20920	1.06

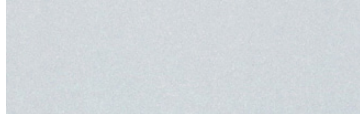
*delivered lumens based on 4000K, 90+ cri



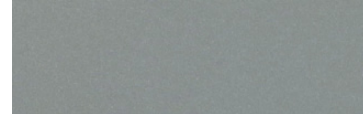
Powder Coat Paint Finishes



MW matte white



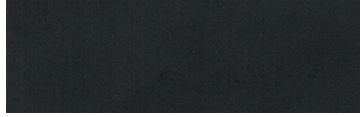
AP anodized paint



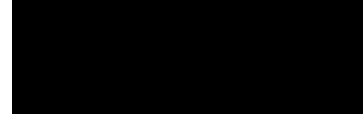
SS satin silver



TG textured gray



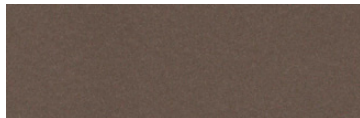
FB flat black



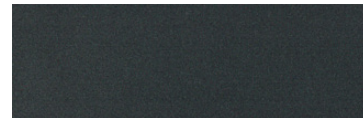
SB satin black



CP champagne



BZ bronze



GM gun metal



OR orange 2011



BU blue 5017



BS brass



RD red 3020



YO yellow 1018



MB military blue

For accurate color verification, actual finish samples are available upon request.

Premium Finishes*



RAL#

*Available on select series. Consult product submittal for availability.

